

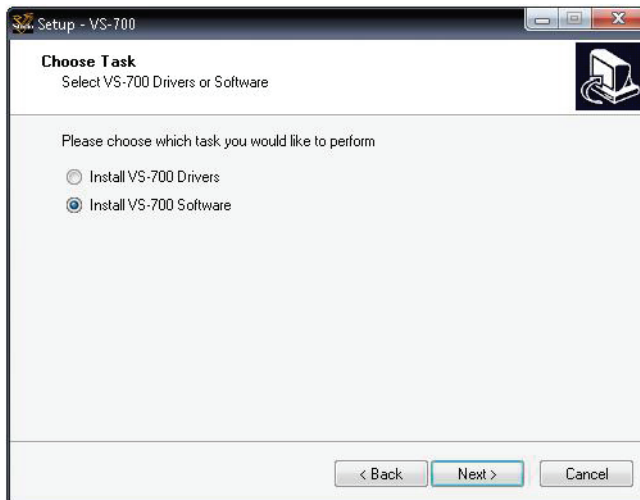
The diagram is divided into two main sections. The top section features a grid of circles arranged in four rows and two columns. The bottom section is a large grid of horizontal lines, with each line containing a small, illegible text fragment.

Installing the VS-700 Control Surface Plug-in

1. Close all programs and any open windows. If you are running any antivirus programs the prevent software installation these will need to be disabled.
2. Insert the included “SONAR V-STUDIO 700 CD-ROM” into your computer's CD/DVD-ROM drive.
3. If the “VS-700 Setup” AutoRun appears.

If you have AutoRun disabled, right-click on the “My Computer” or “Computer” icon located on your desktop (or found under the Start menu) and select “Explore”. Afterwards, right-click on your CD-ROM and/or DVD-ROM labeled “VS-700 Setup” and select “Explore”. From there, locate and launch the “VS-700_Setup” or “VS-700_Setup.exe”.

4. In the “Choose Task” dialog, select “Install VS-700 Software” (see the following figure) and click [Next].



Contents

| | |
|---|----------|
| About This Manual | 3 |
| SONAR VS-700C Getting Started Guide | 6 |
| Installing the VS-700C Driver | 6 |
| Windows XP Users | 7 |
| Windows Vista Users | 10 |
| Installing the VS-700 Control Surface Plug-in | 12 |
| MIDI Device Settings | 16 |
| MIDI Controllers/Surfaces Settings | 17 |
| Loading the VS-700 Plug-in | 17 |
| VST/VSTi Registration and Settings | 18 |

SONAR VS-700C Getting Started Guide

The SONAR VS-700C Getting Started manual provides basic information about how to install the VS-700C driver on your computer and make initial settings in SONAR.

Before using the VS-700C with SONAR, you must perform the following steps, which are explained in detail in this manual:

1. **Install the VS-700C drivers.** For details, see **Installing the VS-700C Driver (p. 6)**.
2. **Install the VS-700 Control Surface plug-in.** For details, see **Installing the VS-700 Control Surface Plug-in (p. 12)**.
3. **Configure SONAR's MIDI ports.** For details, see **MIDI Device Settings (p. 16)**.
4. **Enable the VS-700 Control Surface plug-in.** For details, see **MIDI Controllers/Surfaces Settings (p. 17)**.
5. **Register VST/VSTi plug-ins.** For details, see **VST/VSTi Registration and Settings (p. 18)**.

Installing the VS-700C Driver

What is a Driver?

A driver is software that transfers data between the VS-700 and application software on your computer when your computer and the VS-700 are connected via a USB cable. You will need to install the driver before connecting the VS-700 with your computer.

* Log on to Windows as a user whose account type is administrator (such as the Administrator account).

● **Windows XP Users** p. 7

● **Windows Vista Users** p. 10

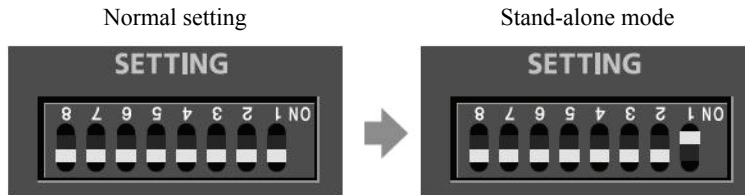
cf. 

After installing the VS-700 drivers, see **MIDI Device Settings (p. 16)** for information on how to configure the MIDI ports.

Windows XP Users

1. **IMPORTANT:** The VS-700C needs to be configured for “Stand-Alone Mode” to be used without the VS-700R I/O connected.

To configure the VS-700C for stand-alone mode, locate the “Setting” area on the back of the VS-700C containing eight DIP switches. Carefully move DIP switch 1 to the “on” position (facing up). DIP switches 2-8 should be set to the default “off” position (facing down). See the following picture.



2. Disconnect all USB cables (except those for a USB keyboard and/or USB mouse, if used), then start up Windows.
3. Close all programs and any open windows. Disable any antivirus programs that could prevent or cause problems with driver installation.
4. Insert the included “SONAR V-STUDIO 700 CD-ROM” into your computer's CD/DVD-ROM drive.
5. The “VS-700 Setup” AutoRun will appear if you have AutoRun enabled. Click the [Cancel] button to close the VS-700 Setup.
6. Right-click on “My Computer” from the desktop or the Start menu on the Windows task bar and select “Explore”.
7. Right-click the CD-ROM and/or DVD-ROM drive labeled “VS-700” and select “Explore”.
8. Open the folder labeled “Drivers”.
9. Open the folder labeled “VS700C”.

10. Open the folder labeled “XP”.
11. Launch the VS-700C Driver Setup by double-clicking on “Setup” or “Setup.exe”
12. To begin the installation, click the [Next] button.
13. Follow the on screen instructions in the VS-700C Driver Setup. The installer will prompt you to connect a USB cable from the VS-700C to your computer and to power on the VS-700C. Only do so when prompted by the installer.

* If a dialog box regarding Windows logo testing appears, click [Continue].

This completes preparations for installing the driver.

Leave the screen open; do not close it at this point.

If the “Driver Signing Options” setting was not set to “Ignore”, a “Hardware Installation” dialog box will appear.

A dialog box with a “” symbol will appear.

1. Click [Continue Anyway] and continue the installation.

A dialog box with a “x” symbol will appear.

1. Click [OK].
2. When the “Found New Hardware Wizard” appears, click [Finish].
3. Return to step 1 (p. 7) and re-install the driver from the beginning of the procedure.

14. The Found New Hardware Wizard dialog will appear.

This window should look similar to the following picture.

Verify that the New Hardware Wizard reads: “This wizard helps you install software for: VS-700C”. Choose “Install the software automatically (Recommended)” and click [Next].

NOTE

If the Wizard displays “UM-1” instead of “VS-700C”, go back to step 1 and make sure your DIP switches are setup properly.

15. When the screen indicates “Completing the Found New Hardware Wizard”, click [Finish].

16. When the VS-700C Setup indicates “Installation has completed”, click the [Close] button.

Windows Vista Users

1. **IMPORTANT:** The VS-700C needs to be configured for “Stand-Alone Mode” to be used without the VS-700R I/O.

To configure the VS-700C for stand-alone mode, locate the “Setting” area on the back containing eight DIP switches. Carefully move DIP switch 1 to the “on” position (facing up). DIP switches 2-8 should be set to the default “off” position (facing down). See the following picture.

Normal setting

Stand-alone mode

2. Disconnect all USB cables except those for a USB keyboard and/or USB mouse, if used, then start up Windows.
3. Close all programs and any open windows. Disable any antivirus programs that could prevent or cause problems with driver installation.
4. Insert the “SONAR V-STUDIO 700 CD-ROM” into your computer's CD/DVD-ROM drive.
5. The “VS-700 Setup” AutoRun will appear if you have AutoRun enabled. Click the [Cancel] button to close the VS-700 Setup.
6. Right-click on “My Computer” from the desktop or the Start menu
7. Right-click the CD-ROM and/or DVD-ROM drive labeled “VS-700” and select “Explore”.
8. Open the folder labeled “Drivers”.

9. Open the folder labeled "VS700C".
10. Open the folder labeled "Vista32" if you are running a 32-bit installation of Vista. If you are running a 64-bit installation of Vista, open the "Vista64" folder.
11. Launch the VS-700C Driver Setup by double-clicking on "Setup" or "Setup.exe".
12. To begin the installation, click [Next].
13. Follow the on screen instructions in the VS-700C Driver Setup.
14. If a Windows security dialogbox appears, click [Install].
15. Follow the on screen instructions. The installer will prompt you to connect a USB cable from the VS-700C to your computer and to power on the VS-700C. Only do so when prompted by the installer.
16. The screen will indicate "VS-700C driver has been installed successfully".
17. When the VS-700C Setup indicates "Installation has been completed", click [Close].

5. Follow the on screen instructions until arriving at the “Select Components” screen.

Windows Vista 64-bit users: if you are running a 64-bit installation of Windows Vista, you will be prompted to select 32-bit or 64-bit components for installation. Select which option correlates to your installation of SONAR.

6. When prompted to choose “Which components should be installed?” place a check mark next to the “VS-700 Control Surface plug-in”. Remove the check mark next to VS-700 Synth Editor.

Optional: included with your package is Rapture version 1.1 containing the Rapture Expansion Packs 1 and 2. If you would like to install these, place a check mark next to “Rapture 1.1” and “Rapture XP1 and XP2”.

See the following image.

14. The Found New Hardware Wizard dialog will appear.

This window should look similar to the following picture.

Verify that the New Hardware Wizard reads: "This wizard helps you install software for: VS-700C". Choose "Install the software automatically (Recommended)" and click [Next].

NOTE

If the Wizard displays "UM-1" instead of "VS-700C", go back to step 1 and make sure your DIP switches are setup properly.

15. When the screen indicates "Completing the Found New Hardware Wizard", click [Finish].

16. When the VS-700C Setup indicates "Installation has completed", click the [Close] button.

12. Download the SONAR V-Studio 700 1.1 update from Cakewalk's Web site in the link below. Make sure to download it to a location on your computer that you will be able to find at a later time.

http://www.cakewalk.com/VS700_11

Important: you must install SONAR 8.3 or later for this update to run successfully. The SONAR 8.3 update installer may be downloaded from Cakewalk's Web site using the following link:

<http://www.cakewalk.com/Support/kb/kb20090219.asp>

13. Locate your download and launch VStudioPatch.exe.
14. Follow the on screen instructions until arriving at the "Select Components" screen.
15. Place a check mark next to the "VS-700 Control Plug-in for SONAR" and "ACT Plug-in Maps for VS-700 and SONAR 8 Producer" only. Do not place a check mark next to the other options. See the following picture.

16. Click [Next] and continue to follow the on screen instructions until the installer finishes.

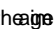
NOTE

Make sure to register your product as prompted by the installer. By registering, you will gain access to free updates, technical support, tips and exclusive upgrade offers.

MIDI Device Settings

1. Make sure that the VS-700s connected to your computer, and then launch SONAR.
2. Click Options | MIDI Devices to open the “MIDI Devices” dialog box.
3. In the “Inputs” and “Outputs” lists , select only the CONSOLE (VS-700C).

NOTE

Your screen may not resemble the  above if you have additional MIDI devices installed on your computer

4. Do not select the V-LINK (VS-700C).
5. Click [OK].

MIDI Controllers/Surfaces Settings

Before you use the VS-700C console to control SONAR, load the VS-700 plug-in and make settings to enable it.

Loading the VS-700 Plug-in

1. Make sure that the VS-700 is connected to your computer, and then start up SONAR.
2. In SONAR, choose “Options | Controllers/Surfaces” to open the “Controllers/Surfaces” dialog box.
3. Click the “Add Controller/Surface” button. The “Controller/Surface Settings” dialog box will appear.
4. In the “Controller/Surface Settings” dialog box, in the “Controller/Surface Settings” field, choose “VS-700.”
5. Select the controllers’ Input Port and Output Port. Select “CONSOLE (VS-700 CONSOLE)” for both the Input Port and the Output Port.
6. Click [OK] to close the dialog box.
7. In the “Controllers/Surfaces” dialog, make sure that the “WAI” check boxes and the “ACT” check boxes are enabled, and click [Close].

MEMO

If you’re using an Edirol PCR series as an external MIDI keyboard, use the dedicated plug-in for the PCR series. Details on settings and using plug-in are provided in the section “Edirol PCR Controllers” of the “SONAR 8 Reference Guide”(PDF file) on the SONAR 8 DVD-ROM.

What is ACT?

ACT (Active Controller Technology) is a functionality that lets you operate SONAR from an external device such as a controller or surface. The plug-in effect software synthesizer that is active in SONAR will automatically be the target of control.

For details, refer to the section “ACT” in the “SONAR 8 Reference Guide”(PDF file) on the SONAR 8 DVD-ROM.

VST/VSTi Registration and Settings

By default, the VST plug-ins included with SONAR are installed in the following folder, and can be used from SONAR without changing any settings.

C:\Program Files\Cakewalk\VstPlugins

If you have VST plug-ins installed in any other folders, you'll need to register them in SONAR as follows.

1. Execute the "Options | Global" command and click the "VST Plug-Ins" tab.
2. If the folder in which your VST plug-ins are installed does not appear in the "VST Scan Folder(s) list", click the [Add] button and specify the folder in which your VST plug-ins are installed.
If a folder in which no VST plug-ins are installed is shown, click the folder name to select it, and then click [Remove].
3. When you've finished specifying the folders that SONAR should scan, click [OK].
4. In the "VST Scan" section, click the [Scan VST Folders] button.
Your VST plug-ins have now been registered in SONAR.

About Cakewalk Plug-in Manager

Cakewalk Plug-in Manager allows you to edit the plug-in menu, manage presets, and configure settings for each VST plug-in.

For details on using Cakewalk Plug-in Manager, refer to the SONAR 8 Reference Guide (PDF file), and to the online Help for Cakewalk Plug-in Manager.

